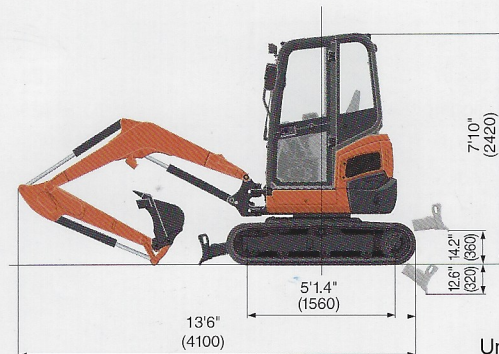
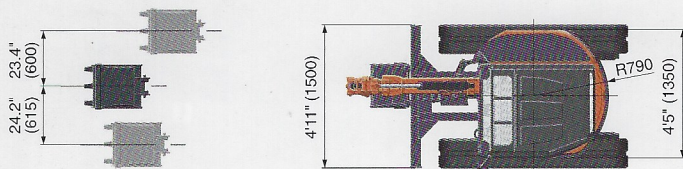


# SPECIFICATIONS

|  |                          |   |                                 |
|--|--------------------------|---|---------------------------------|
| Model  |                          | U27-4   |                                 |
| Type of ROPS/FOPS                                      |                          | Canopy / Cab  |                                 |
| Type of tracks   |                          | Rubber  |                                 |
| Engine   | Model                    | Kubota D1105-BH   |                                 |
|  | Output (SAE J1995 gross) | HP (kW)/rpm   | 20.9 (15.6) / 2400              |
|  | Output (SAE J1349 net)   | HP (kW)/rpm   | 20.0 (14.9) / 2400              |
|  | Displacement             | cu.in. (cc)   | 68.5 (1123)                     |
| Dimensions   | Overall length           | ft. in.(mm)   | 13'6" (4100)                    |
|  | Overall height           | Canopy / Cab ft. in.(mm)  | 7'11" (2420) / 7'10" (2400)     |
|  | Overall width            | ft. in.(mm)   | 4'11" (1500)                    |
|  | Min. ground clearance    | in.(mm)   | 12.1 (307)                      |
| Hydraulic system                                       | Pump capacity            | gpm (ℓ/min.)  | 7.6 (28.8) × 2 / 5.1 (19.2) × 1 |
|  | Auxiliary hydraulic flow | gpm (ℓ/min.)  | 12.7 (48)                       |
|  | Max. breakout force      | Bucket / Arm lbs. (kgf)   | 7014 (3180) / 2777 (1260)       |
| Drive system   | Travel speed             | Low / High mph (km/h)   | 1.6 (2.6) / 2.7 (4.3)           |
|  | Max. traction force      | Low speed lbs. (kgf)  | 6767 (3069)                     |
|  | Tumbler distance         | ft. in.(mm)   | 5'1.4" (1560)                   |
|  | Crawler length           | ft. in.(mm)   | 6'6.3" (1990)                   |
|  | Shoe width               | Rubber in.(mm)  | 11.8 (300)                      |
|  | Ground contact pressure  | Canopy psi (kgf/cm <sup>2</sup> )<br>Cab psi (kgf/cm <sup>2</sup> ) | 3.321 (0.234)<br>3.481 (0.245)  |
| Swing system   | Unit swing speed         | rpm   | 9.9                             |
|  | Boom swing angle         | Left / Right degree   | 75 / 55                         |
| Blade  | Dimension                | Width ft. in.(mm)   | 4'11" (1500)                    |
|  |                          | Height ft. in.(mm)  | 11.8" (300)                     |
|  | Max. lift above ground   | in.(mm)   | 14.2" (360)                     |
|  | Max. drop below ground   | in.(mm)   | 12.6" (320)                     |
| Hydraulic oil (reservoir / system)                     |                          | gal (ℓ)   | 5.8 (22) / 9.7 (37)             |
| Fuel reservoir   |                          | gal (ℓ)   | 8.7 (33)                        |
| Operating weight<br>(Includes operator weight 175lbs.) | Canopy Rubber            | lbs. (kgf)  | 5688 (2580)                     |
|  | Cab Rubber               | lbs. (kgf)  | 5908 (2680)                     |

## DIMENSIONS



Unit: ft. in. (mm)

Kubota Tractor Corporation reserves the right to change the stated specifications without notice. This brochure is for descriptive purposes only and reasonable efforts were used to set forth the contained information; some items shown may be optional and some products shown may not be available at all dealerships. Kubota disclaims all representations and warranties, express or implied, or any liability from the use of this brochure. For complete warranty, safety and product information, consult your local Kubota dealer and the operator's manual. Power (HP/KW) and other specifications are based on various standards or recommended practices. For your safety, Kubota strongly recommends the use of a Rollover Protective Structure (ROPS) and seat belt in almost all applications. This brochure is intended for the United States and US territories only. For information regarding Kubota products or services outside these areas, see Kubota Corporation's global web site. Kubota does not provide parts, warranty or service for any Product which is re-sold or retailed in any country other than the country for which the Product(s) were designed or manufactured.

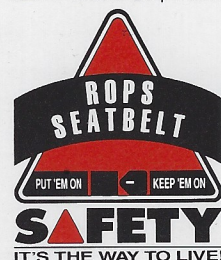
# Kubota

## KUBOTA TRACTOR CORPORATION

1000 Kubota Drive, Grapevine, TX 76051 Tel 888-4 KUBOTA

Visit our web site at: [KubotaUSA.com](http://KubotaUSA.com)

©2019 Kubota Corporation



**Kubota  
Genuine Parts**  
for maximum  
performance,  
durability and  
safety

